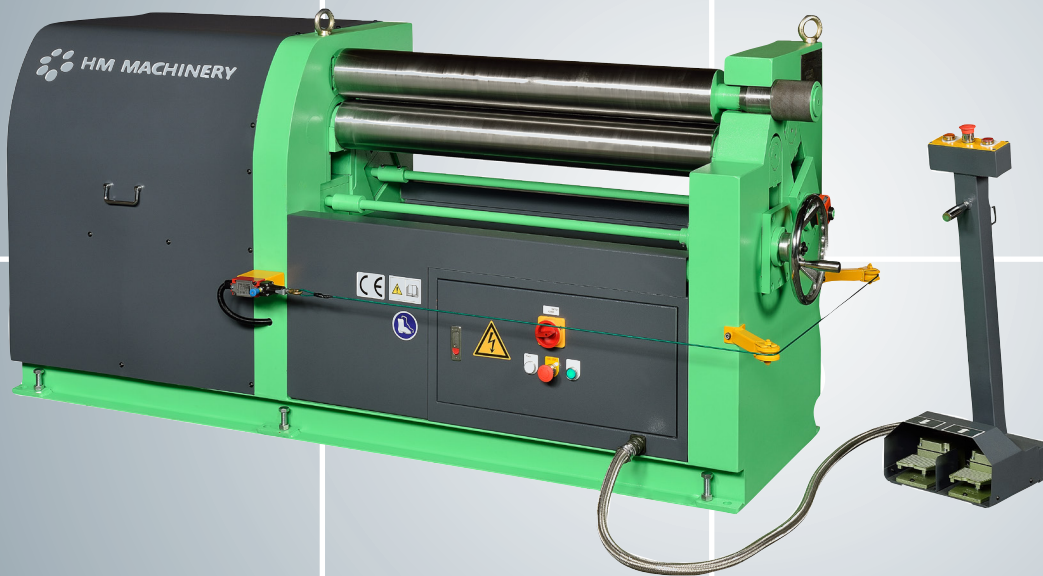


## MRM - Modern design heavy duty motorized bending rollers developed by HM MACHINERY



- Fully hardened gear-drive system
- Solid steel gable-ends
- Asymmetrical – initial pinch rolls
- High polished finish of rolls
- 3 position foot-pedal (CE)

- member of the strong SCANTOOL GROUP



**HM MACHINERY**  
Cutting-Edge Technology



The MRM Motorised Bending Rolls are constructed with solid steel gable-ends, and with modern soft radius, clean surface design. The range of MRM Bending Rolls can accommodate sheets from 1050-3050mm and up to 10.0mm thickness in Mild Steel.

The three-roll independently mounted design, enables high productivity with easy adjustment of the rolls. With both upper and lower rolls being driven, the marking of materials through slipping rolls is easily avoided. In addition the high polished finish helps to prevent damage to pre-finished components, even with highly sensitive materials.

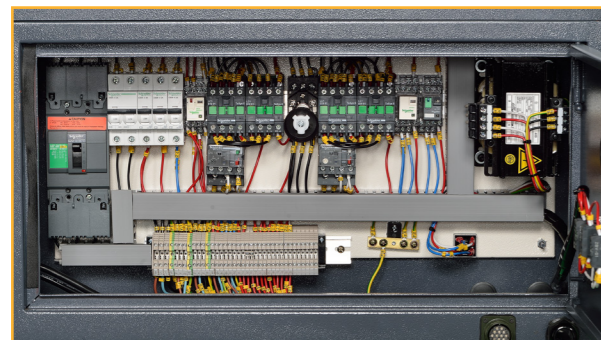
The MRM bending rolls are ideal for working with Aluminium, particularly for, air conditioning channels, advertising panels and sheet metal covers.

#### Standard Equipment

- Asymmetrical – initial pinch rolls
- Upper and lower rolls are driven directly via a hardened gear system.
- Standard alloy-steel rolls
- Motorised adjustment of back roll with mm-counter for accurate bending
- Solid steel gable-ends
- Top roll to slip with mechanical manual drop-end
- Mobile control panel with 3 position foot pedal (including emergency stop)
- Conical Bending Device
- Precision bending through a heavy duty brake motor
- Built to comply fully with current EC Safety Directives (CE marked)

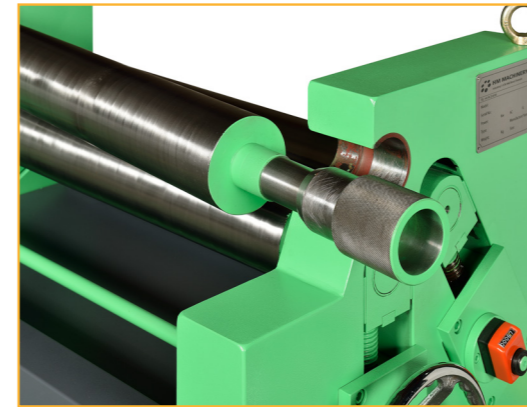
#### Optional Equipment

- Digital read-out for rear(back) roll
- Hardened rolls



The electrical cabinet has been integrated with easy access from both the front and rear side of the machine. All electronic components are sourced from Schneider - Germany, and are so positioned to allow easy access for servicing.

#### Cutting-Edge Technology



Moveable foot-pedal with control of the rear(back) roll rise & fall, and forward/reverse of all three rolls.

3 position foot-pedal complete with built-in emergency stop in foot pedal.

Easy to release top roll for quick removal of finished parts. Rear(back) roll with mm counter for easy and precise bending



#### Bending Technology

MRM models, when fitted with the optional hardened alloy steel rolls, ensures optimum roll life-span, for high production usage, when working with both mild, and harder stainless steel materials

Model	Working length	Roll diameters	Prebending capacity ST37	Bending capacity ST37	Min. bending diameter	Roll speed	Motor kW	Dimension LxWxH in mm	Weight Kg
MRM 1050-130	1050 mm	ø130 mm	6,0 mm	7,0 mm	ø195 mm	6,5 m/min.	2,00 / 0,75	2220 x 660 x 1050	1250
MRM 1050-150	1050 mm	ø150 mm	7,0 mm	8,0 mm	ø225 mm	6,0 m/min.	3,75 / 1,1	2220 x 680 x 1080	1450
MRM 1050-170	1050 mm	ø170 mm	8,0 mm	9,0 mm	ø255 mm	6,0 m/min.	3,75 / 1,1	2320 x 700 x 1100	1630
MRM 1050-190	1050 mm	ø190 mm	9,0 mm	10,0 mm	ø285 mm	6,0 m/min.	3,75 / 1,5	2520 x 800 x 1200	2300
MRM 1550-130	1550 mm	ø130mm	5,0 mm	6,0 mm	ø195 mm	6,0 m/min.	2,20 / 1,1	2720 x 660 x 1050	1450
MRM 1550-150	1550 mm	ø150 mm	6,0 mm	7,0 mm	ø225 mm	6,0 m/min.	3,75 / 1,1	2720 x 680 x 1080	1650
MRM 1550-170	1550 mm	ø170 mm	7,0 mm	8,0 mm	ø255 mm	6,0 m/min.	3,75 / 1,1	2820 x 700 x 1100	1830
MRM 1550-190	1550 mm	ø190 mm	8,0 mm	9,0 mm	ø285 mm	6,0 m/min.	3,75 / 1,5	3020 x 800 x 1200	2530
MRM 2050-130	2050 mm	ø130 mm	3,0 mm	4,0 mm	ø195 mm	6,0 m/min.	2,20 / 1,1	3420 x 660 x 1050	1600
MRM 2050-150	2050 mm	ø150 mm	4,0 mm	5,0 mm	ø225 mm	5,0 m/min.	3,75 / 1,1	3420 x 680 x 1080	1900
MRM 2050-170	2050 mm	ø170 mm	5,0 mm	6,0 mm	ø255 mm	5,0 m/min.	3,75 / 1,1	3520 x 700 x 1100	2150
MRM 2050-190	2050 mm	ø190 mm	6,0 mm	7,0 mm	ø285 mm	5,0 m/min.	3,75 / 1,5	3720 x 800 x 1200	2900
MRM 2050-220	2050 mm	ø220 mm	7,0 mm	8,0 mm	ø330 mm	5,0 m/min.	3,75 / 2,2	3800 x 800 x 1200	3100
MRM 2550-150	2550 mm	ø150 mm	3,0 mm	4,0 mm	ø225 mm	5,0 m/min.	3,75 / 1,1	4050 x 680 x 1080	2150
MRM 2550-180	2550 mm	ø180 mm	4,0 mm	5,0 mm	ø270 mm	5,0 m/min.	3,75 / 1,5	4050 x 700 x 1100	3000
MRM 2550-190	2550 mm	ø190 mm	5,0 mm	6,0 mm	ø285 mm	5,0 m/min.	3,75 / 1,5	4250 x 800 x 1200	3130
MRM 2550-220	2550 mm	ø220 mm	6,0 mm	7,0 mm	ø330 mm	5,0 m/min.	5,50 / 2,2	4250 x 900 x 1300	4100
MRM 3050-160	3050 mm	ø160 mm	2,0 mm	3,0 mm	ø240 mm	5,0 m/min.	3,75 / 1,1	4750 x 680 x 1080	2650
MRM 3050-190	3050 mm	ø190 mm	3,0 mm	4,0 mm	ø285 mm	5,0 m/min.	3,75 / 1,5	4850 x 700 x 1200	3650
MRM 3050-200	3050 mm	ø200 mm	4,0 mm	5,0 mm	ø300 mm	5,0 m/min.	3,75 / 1,5	4850 x 800 x 1200	3900
MRM 3050-220	3050 mm	ø220 mm	5,0 mm	6,0 mm	ø330 mm	5,0 m/min.	5,50 / 2,2	4850 x 1000 x 1300	5100





HM MACHINERY A/S is an independent company, part of the Scantool Group which consists of 5 well consolidated companies and 4 strong brands: HM MACHINERY, KEF-MOTOR, ARBOGA and SCANTOOL.

For further information about the wide HM product program please see our online catalogue on [www.scantool-group.com](http://www.scantool-group.com) or scan the QR code.



See our complete catalogue on [www.scantool-group.com](http://www.scantool-group.com), just scan this QR code



Sale & distribution:

HM MACHINERY A/S  
Industrivej 3-9  
DK-9460 Brovst, Denmark  
Tel: +45 96 17 93 00  
Fax: +45 96 17 93 03  
[info@scantool-group.dk](mailto:info@scantool-group.dk)  
[www.scantool-group.com](http://www.scantool-group.com)